

NEW LABORATORY SPACE AND TENANT GRADUATIONS PROVIDE OPPORTUNITY FOR REGION'S ENTREPRENEURS AT RESEARCH PARK'S TECHNOLOGY INNOVATION CENTER

SPACE AVAILABLE FOR INNOVATION-BASED COMPANIES

- :: 4,200 sq. ft. of laboratories in 5 suites.
- :: 14,600 sq. ft. of office and IT space.
- :: 13,000 sq. ft. of engineering, equipment and scientific light assembly space.
- :: Suitable for biotechnology companies, software development, Internet applications, medical equipment design and assembly, general office and administrative use.
- :: Recently renovated common areas and office suites.
- :: Short-term leases and flexibility to add or delete space as needs dictate.



The new state-of-the art bioscience laboratories of ZyStor Therapeutics can support a large array of scientific research functions.

“The staff of the research park worked diligently to help ZyStor Therapeutics smoothly and efficiently move its offices and laboratories from St. Louis to the metropolitan Milwaukee area. The facilities are first rate.”

Jon LeBowitz, Ph.D.
Chief Scientific Officer
ZyStor Therapeutics, Inc.

NEW LABORATORIES MEET NEEDS OF REGION'S BIOTECHNOLOGY COMPANIES

Responding to a call from the region's scientific, research, and academic community, the Milwaukee County Research Park (MCRP) recently completed the first phase of a \$700,000 project that completely renovated the first floor of the park's business incubator for start-up technology-based businesses, the Technology Innovation Center, and created approximately 6,600 sq. ft. of state-of-the art bioscience laboratories.

These laboratories, with a sophisticated heating, ventilation, and air conditioning

system, are the only ones of its kind in southeastern Wisconsin.

The Milwaukee Economic Development Corporation (MEDC) assisted in the financing of the new lab project by providing a \$200,000 loan to the research park corporation with very attractive terms.

The MCRP anticipates working with the area's business, financial, academic, economic development and government leadership in attracting more biotechnology companies to the region.

For more information contact Guy Mascari at 414-778-1400 or gtm@mcrpc.org.



The Technology Innovation Center is a classic building in a terrific location at the hub of the metropolitan area – the Zoo Interchange where I-94, I-894, and US 45 meet.

From the TIC, there is immediate access to area freeways from Watertown Plank Road and to the institutions of the Milwaukee Regional Medical Center (MRMC).

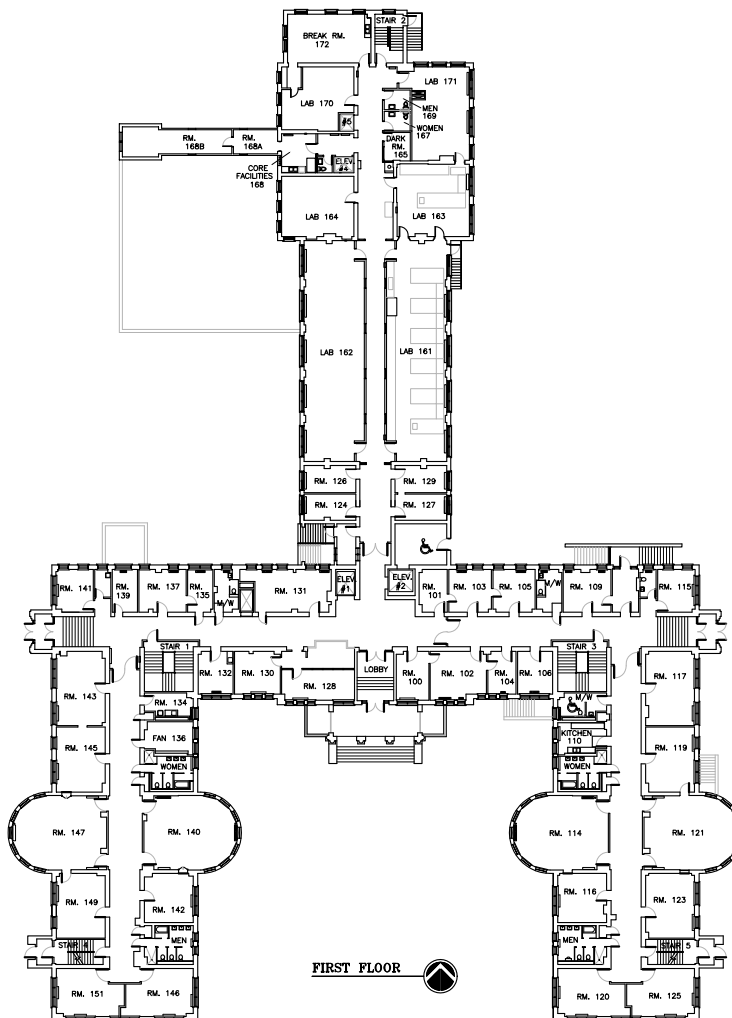
There is a large, highly skilled workforce in the immediate and surrounding areas. Several public transit routes pass by the center.



A HAVEN FOR RESEARCH AND TECHNOLOGY FIRMS

THE TECHNOLOGY INNOVATION CENTER

- :: 85,000 total square feet of affordable and functional space for innovation-based businesses.
- :: Including 11,400 total square feet of high quality bioscience laboratory space.
- :: Core services facility with autoclave/sterilizer, endotoxin-free water polishing unit, DI water, ice machine, glassware washer, and dark room.
- :: Space for engineering laboratories and high-tech light assembly areas.
- :: Dual entry fiber optic supported high bandwidth Internet connectivity.
- :: Extensive business and technical support programs and equipment.
- :: A synergistic environment with over 37 other tech-based companies.
- :: Located in a wooded, pedestrian friendly campus-like environment.
- :: Access to safe, well established neighborhoods, shopping and business support.



For more information contact: Guy T. Mascari, Director of Development
 Milwaukee County Research Park • 10437 Innovation Drive, Suite 123 • Wauwatosa, WI 53226-4815
 414-774-1400 • Fax 414-778-1178 • E-mail: gtm@mcrpc.org • Visit us on the Internet at www.mcrpc.org